

Light efficiency:

79 Lumen/Watt

Light quality:

CRI: 81.1

Color temperature:

3096 K

Output: 3209 lm

Peak: 4370 cd

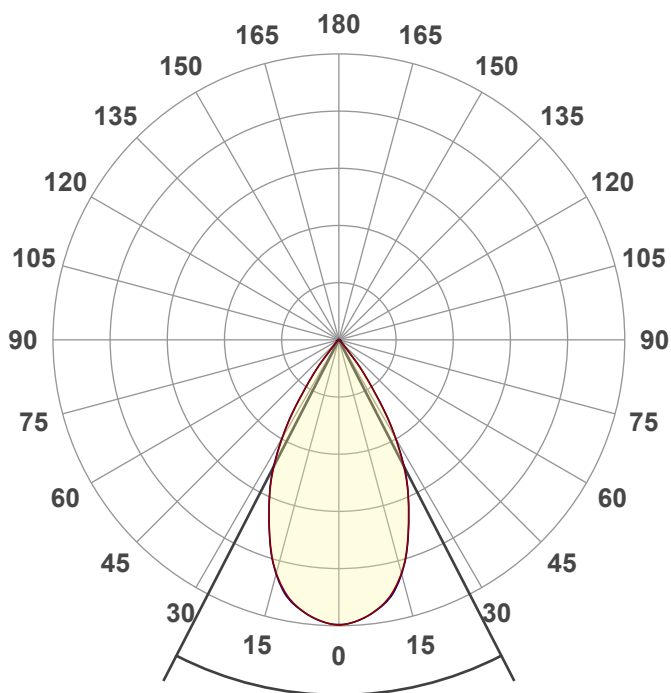
Power: 40.6 W

PF: 0.98



NU3-RD-SW-40LM-30K-80-55D-NL-WH-WH

Date and time:
11/9/2020 2:31:49 PM



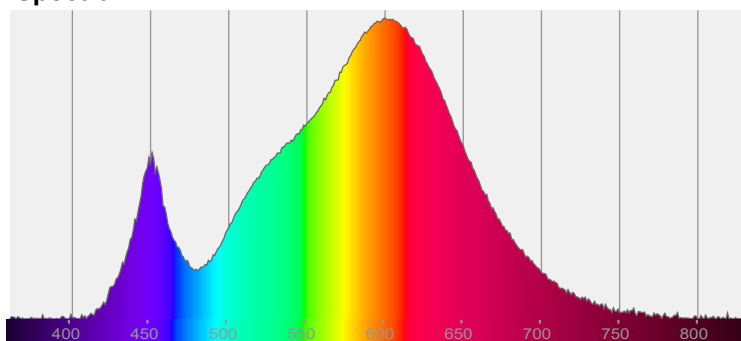
Beam angle

54.4°

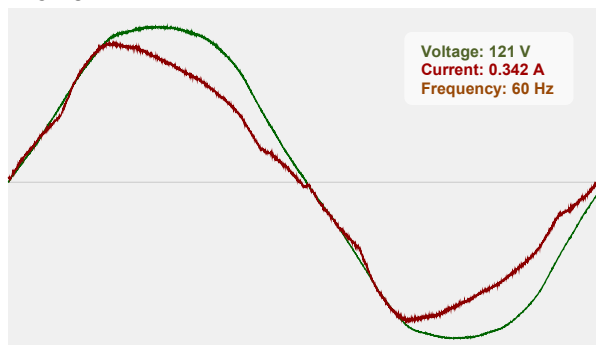


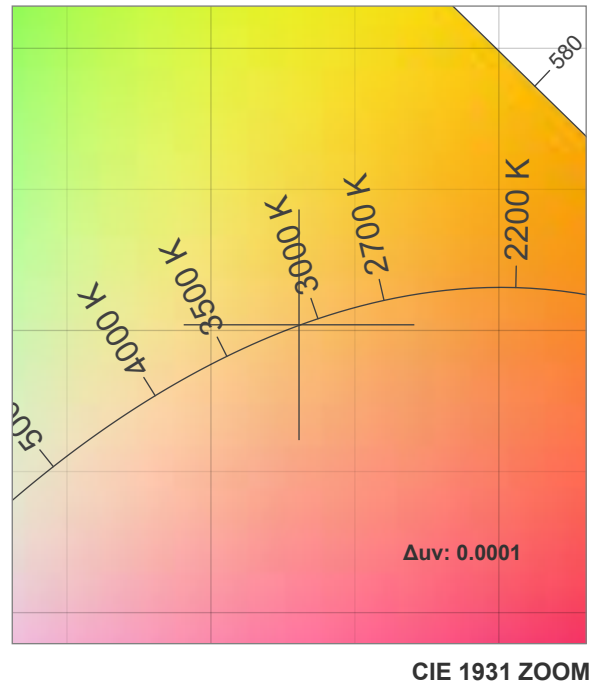
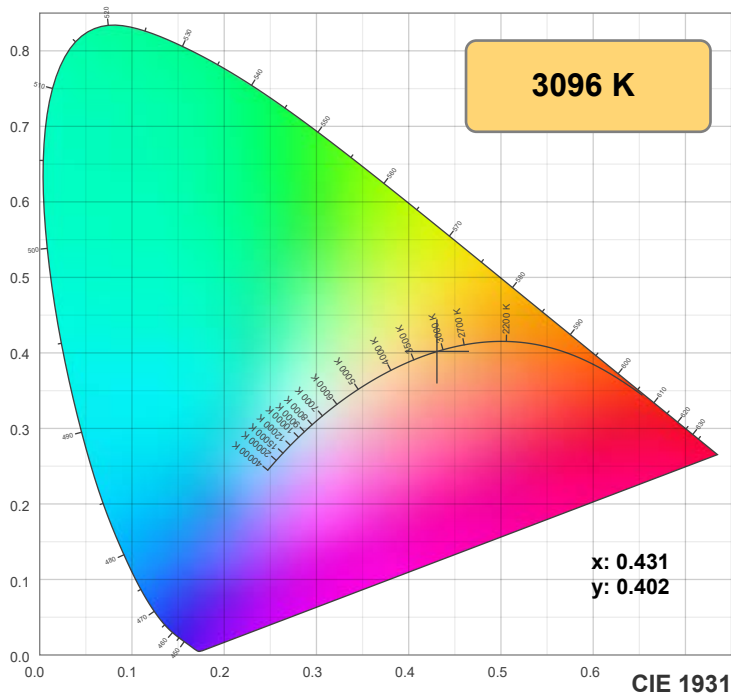
CIE 1931
x: 0.431
y: 0.402

Spectra

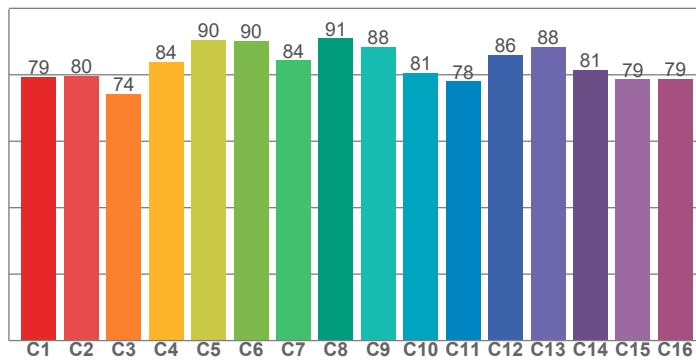


Power

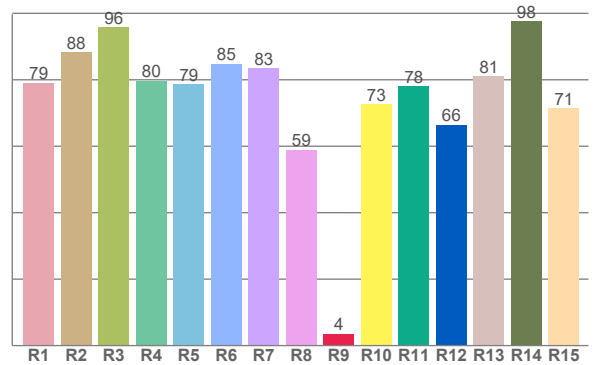




TM30: 83.1



CRI: 81.1 (R1-R8)



CRI R values, only R1-R8 are used to calculate final CRI value

R1	R2	R3	R4	R5	R6	R7	R8	R9	R10	R11	R12	R13	R14	R15
79.1	88.3	95.8	79.7	78.7	84.8	83.5	59.0	3.5	72.7	78.1	66.4	81.0	97.6	71.5

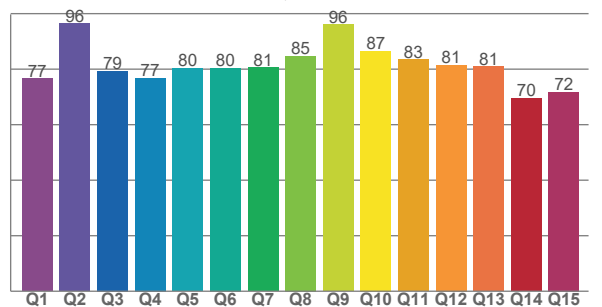
TM30 C values, 16 binned values out of total of 99 C values

C1	C2	C3	C4	C5	C6	C7	C8	C9	C10	C11	C12	C13	C14	C15	C16
79.3	79.6	74.3	84.0	90.5	90.2	84.3	91.0	88.5	80.5	78.0	86.0	88.4	81.5	78.6	78.8

CQS Q values

Q1	Q2	Q3	Q4	Q5	Q6	Q7	Q8	Q9	Q10	Q11	Q12	Q13	Q14	Q15
76.6	96.4	79.4	76.9	80.3	80.3	80.6	84.7	96.1	86.6	83.4	81.5	80.9	69.5	71.8

CQS: 80.2



Color parameters

Color temperature	Color rendering index	Red component	Color fidelity	Color gamut	Color quality scale	Color coordinate cie 1931	Color coordinate cie 1931	Color coordinate	Color coordinate	Color deviation from black body
CCT	CRI	CRI R9	TM30 Rf	TM30 Rg	CQS	x	y	u	v	Δuv
3096 K	81.1	3.5	83.1	97.0	80.2	0.431	0.402	0.247	0.346	0.0001

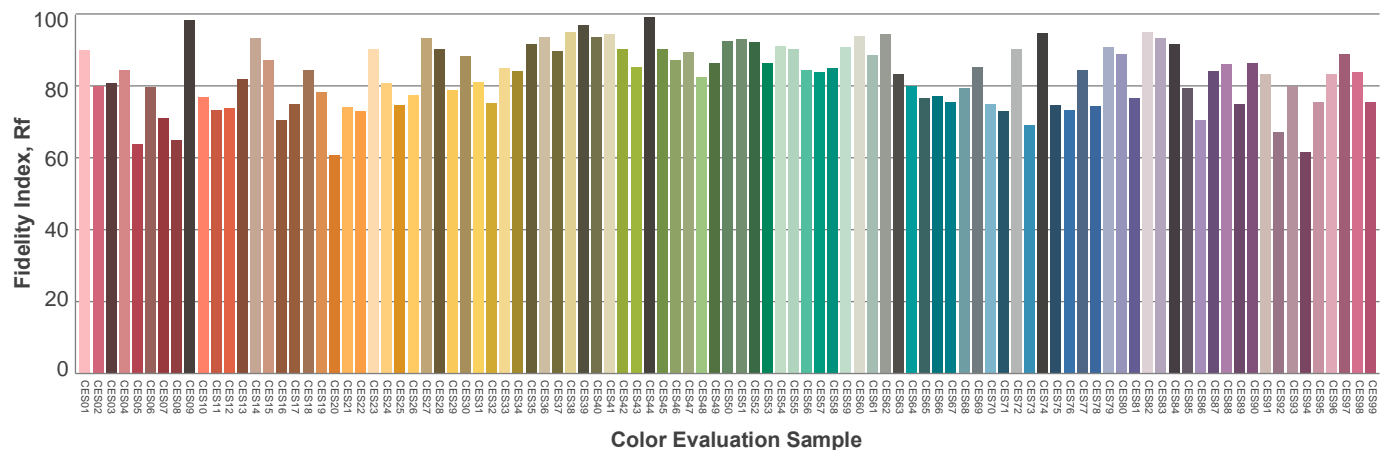
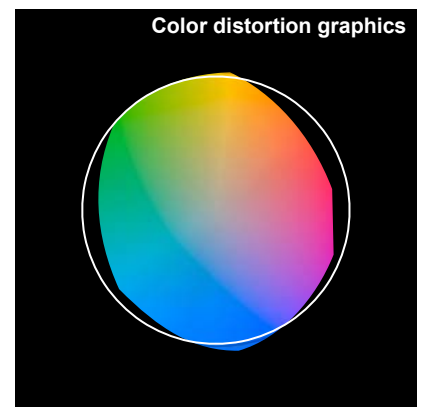
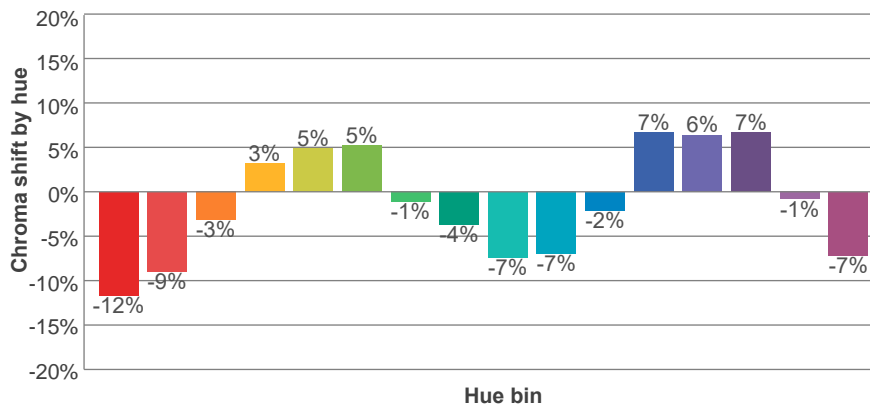
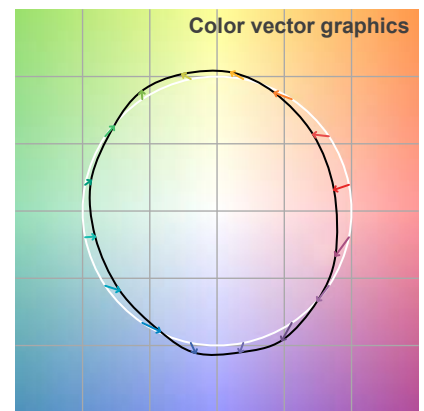
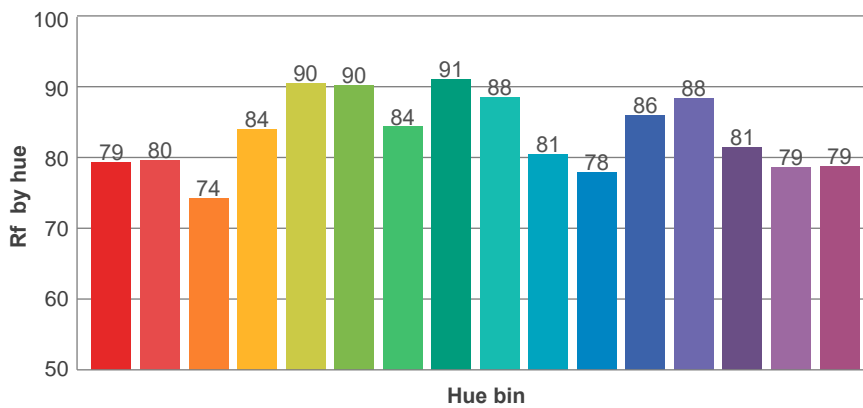
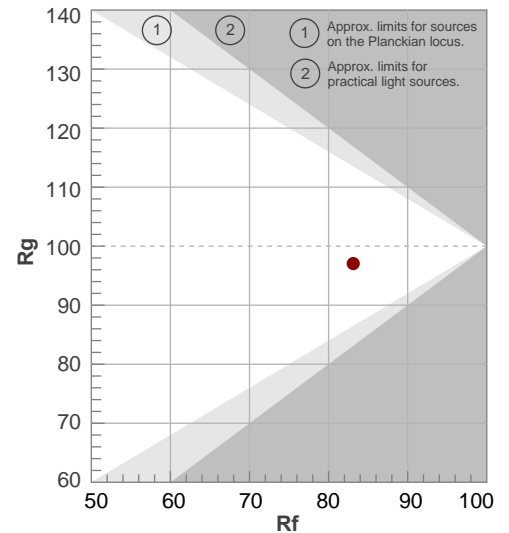
Rf 83.1

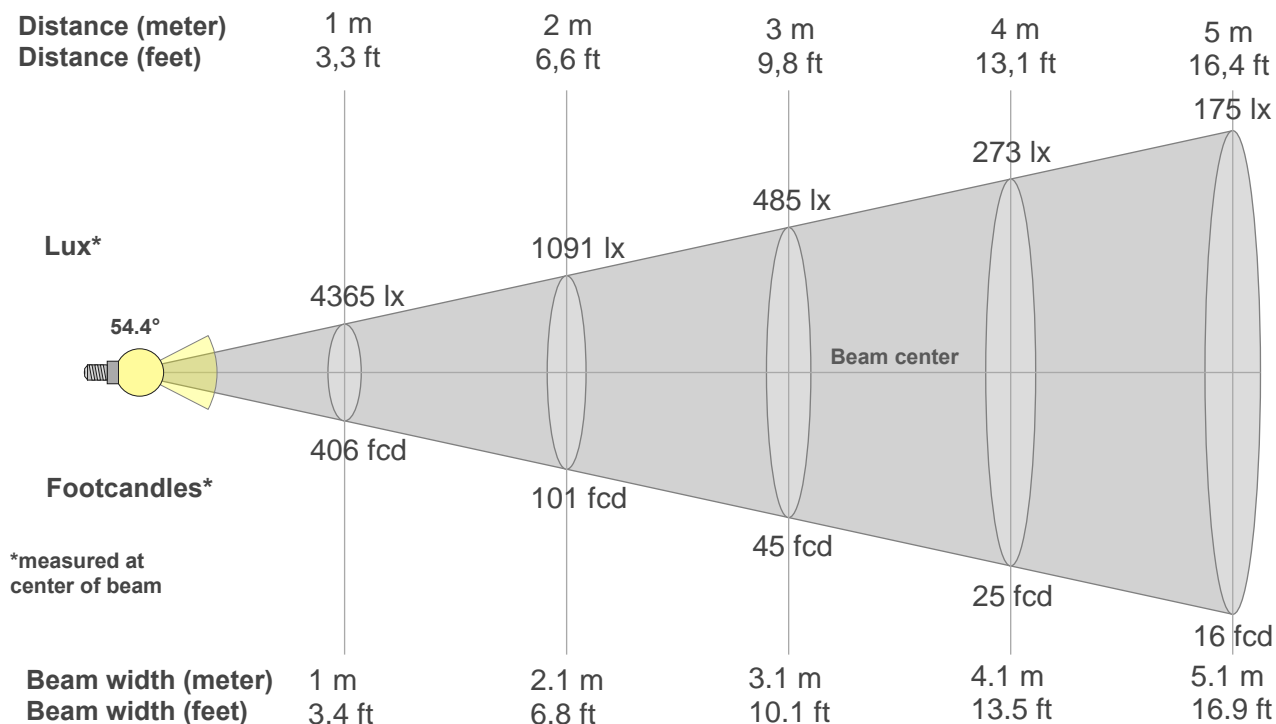
Fidelity index Rf

Rg 97.0

Gamut index Rg

Hue Bin	R _f	Graphic shifts (%)	
		Chroma	Hue
1	79	-12%	-2%
2	80	-9%	8%
3	74	-3%	13%
4	84	3%	10%
5	90	5%	6%
6	90	5%	-3%
7	84	-1%	-10%
8	91	-4%	-4%
9	88	-7%	1%
10	81	-7%	9%
11	78	-2%	15%
12	86	7%	5%
13	88	6%	-4%
14	81	7%	-13%
15	79	-1%	-14%
16	79	-7%	-15%





Beam intensities from 1-20m

1m	2m	3m	4m	5m	6m	7m	8m	9m	10m	11m	12m	13m	14m	15m	16m	17m	18m	19m	20m
3.3ft	6.6ft	9.8ft	13.1ft	16.4ft	19.7ft	23ft	26.2ft	29.5ft	32.8ft	36.1ft	39.4ft	42.7ft	45.9ft	49.2ft	52.5ft	55.8ft	59.1ft	62.3ft	65.6ft
4365lx	1091lx	485lx	273lx	175lx	121lx	89lx	68lx	54lx	44lx	36lx	30lx	26lx	22lx	19lx	17lx	15lx	13lx	12lx	11lx
405.5fcd	101.4fcd	45.1fcd	25.3fcd	16.2fcd	11.3fcd	8.3fcd	6.3fcd	5fcd	4.1fcd	3.4fcd	2.8fcd	2.4fcd	2.1fcd	1.8fcd	1.6fcd	1.4fcd	1.3fcd	1.1fcd	1fcd

Intensities in 0° c-plane

0°	2°	4°	6°	8°	10°	12°	14°	16°	18°	20°	22°	24°	26°	28°	30°	32°	34°	36°	38°
4365	4364	4312	4260	4177	4078	3963	3785	3607	3372	3118	2863	2608	2353	2048	1734	1411	1075	738	502
100%	100%	99%	98%	96%	93%	91%	87%	83%	77%	71%	66%	60%	54%	47%	40%	32%	25%	17%	12%

Intensities in 90° c-plane

0°	2°	4°	6°	8°	10°	12°	14°	16°	18°	20°	22°	24°	26°	28°	30°	32°	34°	36°	38°
4365	4361	4314	4260	4187	4088	3989	3802	3610	3386	3127	2869	2616	2362	2069	1744	1419	1084	748	492
100%	100%	99%	98%	96%	94%	91%	87%	83%	78%	72%	66%	60%	54%	47%	40%	33%	25%	17%	11%

Intensities in 180° c-plane

0°	2°	4°	6°	8°	10°	12°	14°	16°	18°	20°	22°	24°	26°	28°	30°	32°	34°	36°	38°
4365	4364	4312	4260	4177	4078	3963	3785	3607	3372	3118	2863	2608	2353	2048	1734	1411	1075	738	502
100%	100%	99%	98%	96%	93%	91%	87%	83%	77%	71%	66%	60%	54%	47%	40%	32%	25%	17%	12%

Intensities in 270° c-plane

0°	2°	4°	6°	8°	10°	12°	14°	16°	18°	20°	22°	24°	26°	28°	30°	32°	34°	36°	38°
4365	4361	4314	4260	4187	4088	3989	3802	3610	3386	3127	2869	2616	2362	2069	1744	1419	1084	748	492
100%	100%	99%	98%	96%	94%	91%	87%	83%	78%	72%	66%	60%	54%	47%	40%	33%	25%	17%	11%

Beam angle 50%	Field angle 10%	Cutoff angle 2,5%	Intensity ratio in 120° cone	Intensity ratio in 90° cone
54.4°	77.1°	84.4°	99.2%	98.6%